

The best way  
to store and protect  
valuable records  
and cash  
against theft.



## Record Room and Strongroom Doors

KEEPING A STRONG RECORD

### Key Features

- High quality protection using modern high specification materials and technology.
- Manufactured to correspond with the latest security standards.
- Available in a range of security grades.
- Made in compliance with SABS 949 standards.
- Drop shutter ventilators can be supplied where necessary to circulate air in the room and prevent staleness and mustiness.
- The ventilators automatically close when the temperature reaches 100°C to starve the fire of oxygen.
- Fire resistant paneling can be added for one or two hour fire protection.



From



Bishopsgate

**Chubb**safes  
*Trusted the world over.*

RECORD & STRONG-  
ROOM DOORS

### Phoenix Record Room Door

This door is designed for installation into a prepared wall opening of brick or concrete. Its robust construction with a solid 6mm door plate of quality steel makes it ideal for use in offices, shops, factories, schools and homes.

### Category 1 Strongroom Door

Designed to provide a high level of protection for cash, records and valuables, this SABS approved Chubb safes door is recognised by the insurance industry as having superior theft resistant qualities. The door is robustly constructed and incorporates a solid 8mm steel door plate.

### Category 2 Strongroom Door

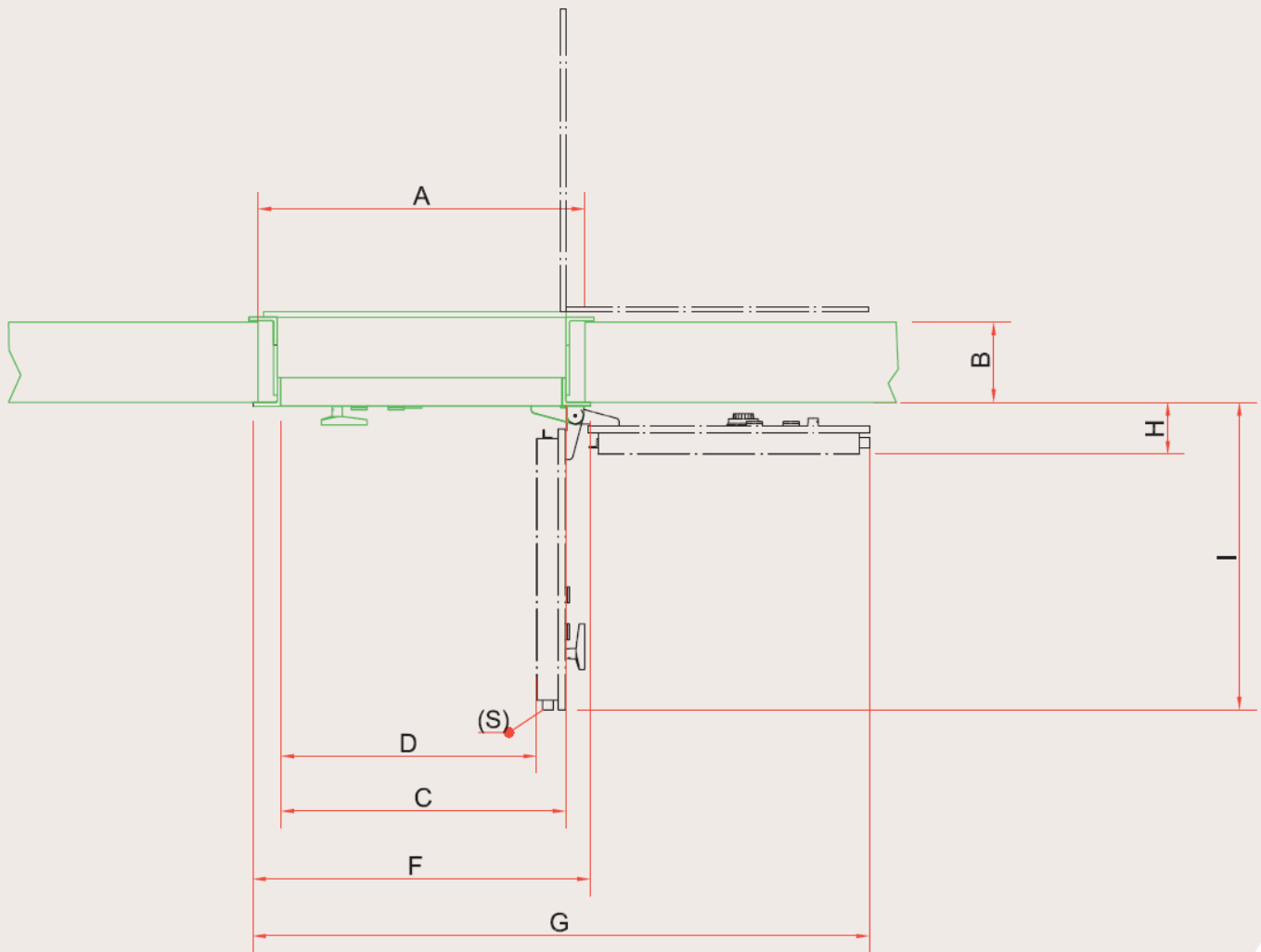
These SABS approved anti-explosive doors are available in either light duty (incorporating a solid 10mm steel plate) or heavy duty (incorporating a solid 20mm steel plate) resistance, depending on the level of attack that it is required to withstand. It provides adequate protection and is ideal for security risks faced by offices, factories, shops, firearm dealers, government departments and post offices.

### Category 2ADM and 3 Strongroom Door

These SABS approved doors have been designed and manufactured to defeat many of the most popular forms of burglary attack with sophisticated high power tools. These high security doors provide exceptional protection for cash and valuables against prolonged attacks, especially those using angle disc grinders or explosives. The doors are manufactured with 60mm Borox™ SP barrier material.

Specifications	Phoenix (6mm steel plate)	CAT 1 (8mm steel plate)	CAT 2 Light Duty (10mm steel plate)	CAT 2 Heavy Duty (20mm steel plate)	CAT 2 ADM (60mm barrier material)	CAT 3 (60mm barrier material)
A Wall Opening	1930H x 850W	1930H x 850W	1930H x 850W	1930H x 850W	1930H x 850W	1930H x 850W
B Recommended Wall Thickness	200(brick or concrete)	200(brick or concrete)	300(brick or concrete)	300(brick or concrete)	450(reinforced concrete)	450(reinforced concrete)
C Clear opening (Door opening @ 180)	1888H x 780W	1888H x 780W	1888H x 780W	1888H x 780W	1888H x 780W	1888H x 780W
D Clear opening (Door opening @ 90)	1888H x 729W	1888H x 727W	1888H x 725W	1888H x 715W	1888H x 667W	1888H x 667W
E Overall door frame height	1980	1980	1990	1990	2010	2010
F Overall door frame width	944	944	964	964	1004	1004
G Overall width of door and frame (Door opening @180)	1743	1743	1753	1753	1823	1823
H Projection of door (Door open 180)	200	200	200	200	200	200
I Projection of door (Door open 90) Locking	960 1x7-lever key lock	960 1x7-lever key lock	960 2x7-lever key lock	960 2x7-lever key lock+ 1xrelocker	960 2x7-lever key lock+ 2xrelockers	960 2x7-lever key lock+ 2xrelockers+ 1x3-wheel keyless combination lock
J Weight	125	145	260	380	486	528





### Chubb Safes Ventilators

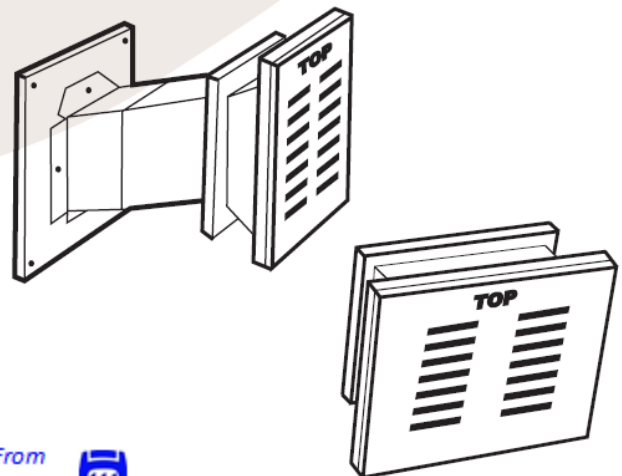
It is advisable that record rooms be adequately ventilated for the benefit of staff working there and also to prevent documents and other articles being damaged by moisture.

In the event of a fire, the ventilator is manufactured to automatically shut when the temperature reaches 100°C, starving the fire of oxygen and therefore putting the fire out with limited damage to documents and other articles.

Chubb Safes automatic drop shutter strongroom ventilators are designed and made for this purpose.

**Double ended to suit 230mm to 470mm maximum wall thickness.**

**Single ended for use when wall is not thick enough for double ended type.**



### PREPARATION:

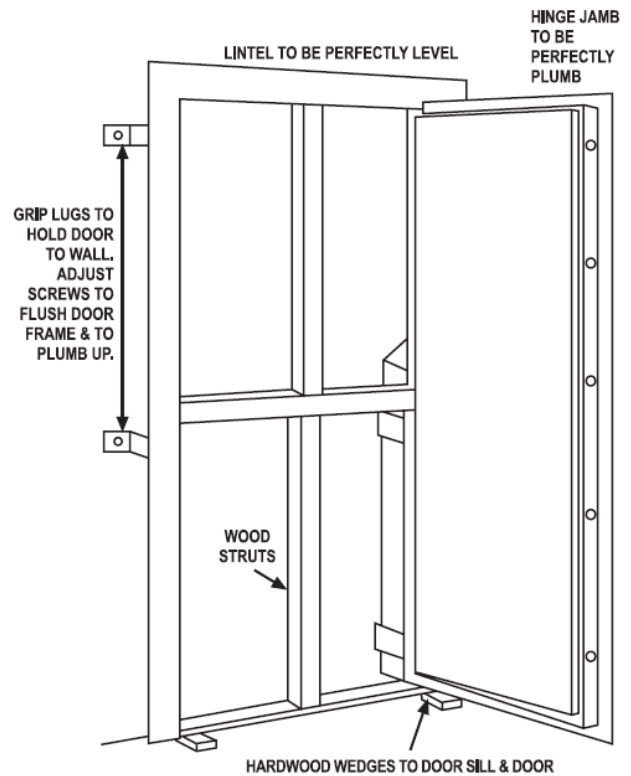
- 1) Prepare a **clear wall opening** (1930mm H x 850mm W).
- 2) Remove the GRIP LUGS from the doorframe.
- 3) Place the door into the wall opening.

**Do not build the Wall around the door.**

**Do not install the door whilst the wall is being erected.**

### INSTALLATION:

- 1) Level to bring the bottom edge of the door to **6mm above** the finished floor level.
- 2) Fit the GRIP LUGS and support the door to prevent it from tilting when opened.  
**Tighten GRIP LUG bolts lightly to hold the door in place.**
- 3) Open the door **slowly and carefully. Wedge and adjust** the door to operate smoothly (see drawing attached). It must not be difficult to open/close or lock/unlock.
- 4) Ensure that the **doorframe is perpendicular** and that **frame sides are not twisted.**
- 5) Tighten the GRIP LUG bolts to firmly hold the doorframe.  
**Do not over tighten, as this will distort the frame.**
- 6) Check that the door does not "run" in the open or closed position. **If the door 'runs' in the open position**, push the bottom section of the frame away from the wall. **If the door 'runs' in the closed position**, push the top section of the frame away from the wall.
- 7) **If the door binds at the bottom**, wedge at point '2'.
- 8) **If the door binds at the top**, wedge at point '1'. Wedges may also be required between the back of the frame and the wall.
- 9) Confirm that the **door closes and opens freely**, that the **bolts work easily** and that the keys can be turned with the bolts fully thrown i.e. that the **door can lock and unlock in the closed position.**
- 10) Open the door to 90° and wedge the outer edge of the door to take the weight off the frame prior to grouting. Place vertical and horizontal struts inside the frame as shown in the drawing.



- 11) Grout the door without removing any of the wedges or struts. Leave to set for 24 hours.
- 12) When the door is painted, do not close it until the **paint is completely dry.**
- 13) **DO NOT REMOVE THE DOOR FROM ITS FRAME AT ANY TIME.**

Drawing shown is for right hand. Order for positioning wedges is reversed for left hand doors.

# Chubb safes

*Trusted the world over.*

Members of the Gunnebo Security Group



**Bishopsgate Int (Nig) Ltd**

52a Campbell Street

Lagos Island CBD

Lagos State 100221

Tel. **+234 (700) 247-4677-4283**

Email: [sales@bishopsgate-nig.com](mailto:sales@bishopsgate-nig.com)

Web: [www.bishopsgate-nig.com](http://www.bishopsgate-nig.com)