

# Chubb safes

## VAULT DOORS



# Chubb safes

*Trusted the world over.*

**70mm, 100mm, 130mm, 180mm RANGE**

The Chubb safes Security Group has over 150 years of experience in building vaults and strongroom equipment throughout the world, keeping ahead of criminal trends and modern methods of attack. Chubb safes Vault Doors provide a high level of security against a wide variety of tools and explosives and consequently are in use today in thousands of bank branches and many of the world's central banks.

The doors described in this brochure are designed for installation at major bank branches or in locations where protection of valuables is considered essential due to high risk factors. Where specification calls for door protection in excess of these, your Chubb safes office will gladly give advice.

From



Bishopsgate

VAULT DOORS



# GENERAL SPECIFICATION

**Door** - Constructed from outer and inner plates of tough steel, continuously welded to form a single structure which encloses a layer of barrier material providing excellent protection against attack by high speed drills, explosives, forcing tools and torch.

**Frame** - Made from formed steel plates at the sides and top with a flat frame at the bottom. The frame is welded together to form a single structure of uniform strength. The doors are hung on strap centres which are provided with vertical adjustment.

**Barrier Material** - Chubb safes F42 -special Chubb safes formulated nylon fibre reinforced barrier material resistant to high speed drilling, oxy-acetylene cutting and jack attack.

**Emergency Door** - These doors feature similar specifications to the main doors and give access into the vault if the main door cannot be opened, possibly as a result of damage from an unsuccessful attack.

**Grille Gate** - An attractive looking grille gate can be fitted for ventilation of the room during the day and control when the door is open. The grille gate is secured by Chubb mortice deadlocks: two locks on the main door's grille, one lock on the emergency door's grille.

**Lighting Control** - A 20 Amp microswitch is fitted to control the electric light in the strong room. This also serves as a fire precaution to ensure that all wiring within the vault is disconnected when the door is closed.

**Finish** - RAL9002 off-white painted or stainless steel cladding with chrome finish door furniture.



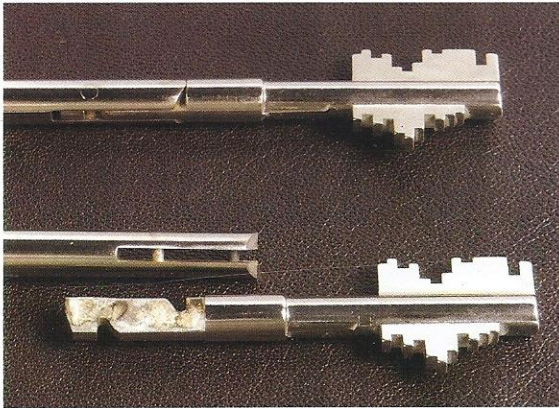
From



Bishopsgate



**Locking** - Standard locking on all doors is dual. One 4-wheel (100 million variations) keyless combination lock and one 11-lever key lock with detachable bitted keys. The keyless combination lock is fitted with a blinder shield and dial check lock for added security.



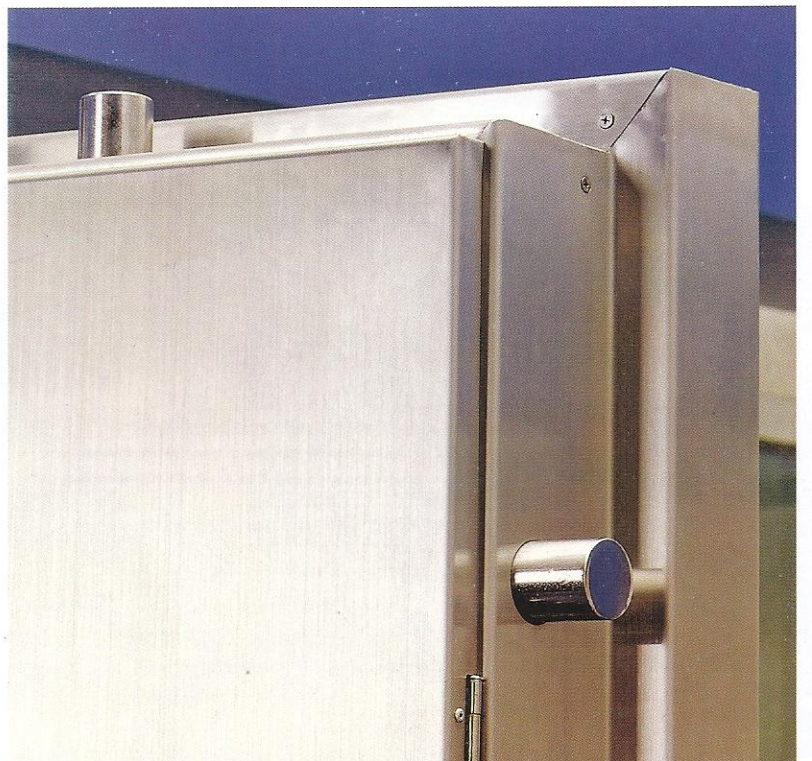
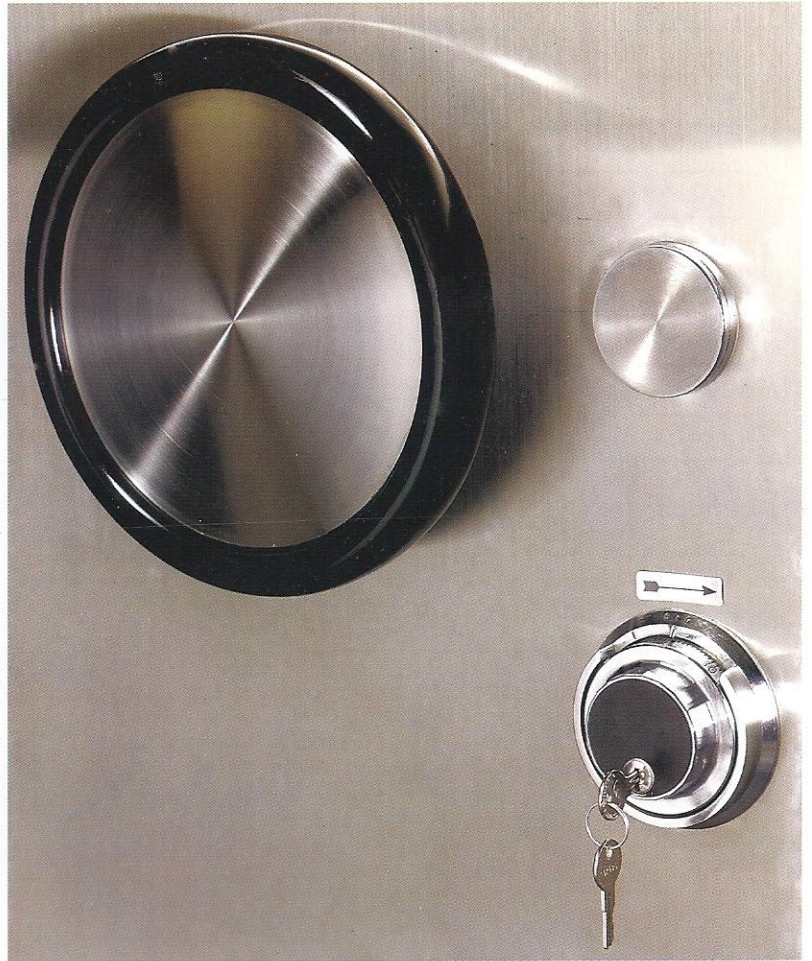
**Relocking Devices** - Additional protection is provided by relocking devices which automatically secure the boltwork mechanism if the locks should be dislodged by explosive or by any other means.

**Boltwork** - 70 mm Doors : 3-way moving bolts with 38 mm diameter engaging to the rebates on the frame. Fixed bolts on the hinge side.

100 mm, 130 mm and 180 mm Doors : 4-way moving bolts with 50 mm diameter engaging to the rebates on the frame for maximum protection.

**Options** - Besides the standard features, Main Doors can be customized with the following options:

- fitted with or prepared for two or three movement time lock
- several different locking options (e.g. third lock, electronic lock etc)
- vault ventilation system where staff and customers need regular access into a vault
- left hand door opening



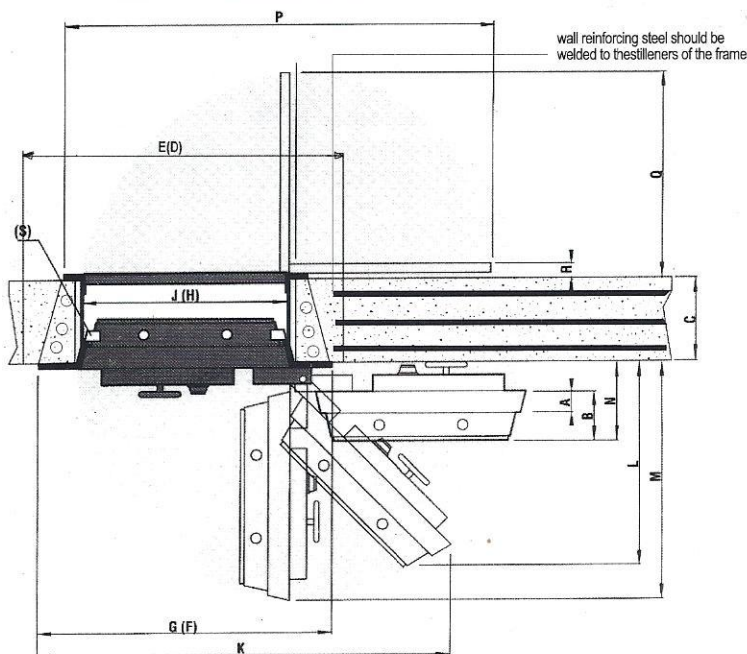


# DIMENSIONS

REF	DESCRIPTION	MAIN DOOR				EMERGENCY DOOR			
All dimensions are in mm									
A	Barrier material thickness	70	100	130	180	70	100	130	180
B	Overall door thickness	183	235	265	325	183	235	265	325
C	Recommended wall thickness (inc. finish)	300	460	460	460	300	460	460	460
(D)	Wall opening required - height	2400	2400	2400	2400	1320	1320	1320	1320
E	Wall opening required - width	1620	1620	1620	1620	1275	1275	1275	1275
(F)	Overall height of frame	2258	2258	2258	2258	1115	1115	1115	1115
G	Overall width of door and frame when door closed	1414	1414	1414	1454	1074	1074	1074	1074
(H)	Clear opening - height	2000	2000	2000	2000	686	686	686	686
J	Clear opening with door at 180° - width	920	920	920	920	580	580	580	580
K	Minimum width to give maximum clear opening	2010	2010	2073	2078	1264	1380	1396	1457
L	Projection of door at position K	1031	1015	1013	1014	729	749	747	758
M	Projection of door at 90°	1128	1160	1160	1160	788	818	818	818
N	Projection of door fully open	283	365	395	425	283	365	395	425
P	Overall width of gate when fully open	2020	2026	2026	2026	1348	1348	1348	1348
Q	Projection of gate at 90°	983	992	992	992	595	625	625	625
R	Projection of gate fully open	47	70	70	70	47	70	70	70
(S)	Number of moving bolts	10	20	20	20	7	10	10	10
(T)	Net Weight (in kg)	905	1725	1895	2500	280	625	675	820

## Shipping Information (size of case including Grille Gate and Vestibule)

HEIGHT	2391	2391	2391	2421	1245	1245	1245	1275
WIDTH	1542	1542	1542	1572	1174	1174	1174	1210
DEPTH	610	860	860	860	610	860	860	860
WEIGHT (Including packing in kg)	1135	1970	2155	2780	380	745	805	960



# Chubb safes

Distributed by :



**Bishopsgate Int (Nig) Ltd**  
 52a Campbell Street  
 Lagos Island CBD  
 Lagos State 100221

Tel. +234 (700) 247-4677-4283  
 Email: [sales@bishoosgate-nq.com](mailto:sales@bishoosgate-nq.com)  
 Web: [www.bishoosgate-nq.com](http://www.bishoosgate-nq.com)