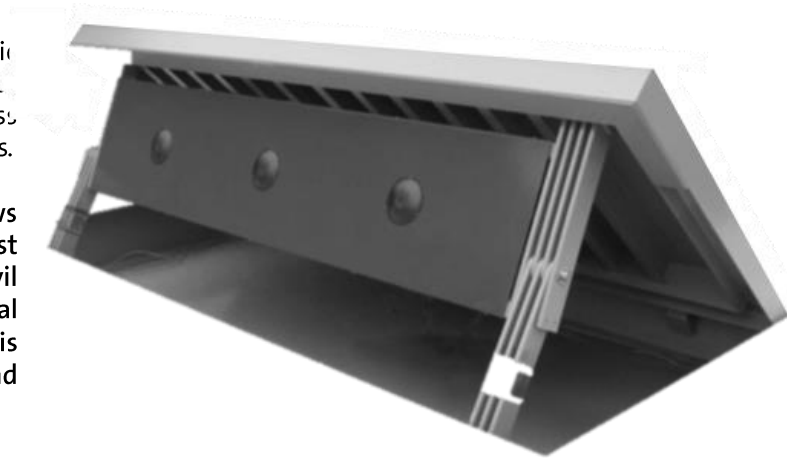


## WEDGE TECH A

Impact Rated Wedge Barrier  
*for outdoor applications*

WEDGE TECH is a maximum security traffic barrier, effectively used to protect against vehicle attack, protecting perimeter access points to the highest international standards.

WEDGE TECH's unique design features allows for the use of a shallow foundation of just 400mm, allowing substantial saving in civil works, when compared to traditional blockers and bollards. The WEDGE TECH is also readily integrated into access control and building security systems.



### AVAILABLE CONFIGURATIONS

- WEDGE TECH A – Impact rated wedge barrier in 2000mm – 4000mm length.

### Typical areas of application include:

Car Parks | Security Checkpoints | Industrial Sites | Government Sites | Mining | Airports | Seaports | Secure Compounds | High Profile Commercial Sites | Embassies | Petro / Chemical Infrastructure | Banks and Cash Centers | Telecommunications Infrastructure | Power Plants

### Alltech Vehicle Barriers & Turnstiles Solutions also feature:

Boom Barriers | Bollards | Fast Folding Gates | Road and Rated Wedge Blockers | Half and Full Height Turnstiles | Tripod Turnstiles | Revolving Doors | Security Booths | Special Needs Access Gates

[FIND OUT MORE ON](#)

[alltechbygunnebo](#)

From



**Bishopsgate**

Brought to you by **GUNNEBO®**  
*For a safer world*

## ELECTRICAL DATA & CONDITIONS OF USE

POWER	<ul style="list-style-type: none"> <li>Power Supply: 230Vac/ 50Hz</li> <li>Power Consumption: 4.0Kw</li> </ul>
LOGIC VOLTAGE	<ul style="list-style-type: none"> <li>24 Volts</li> </ul>
OPERATING TEMPERATURES	<ul style="list-style-type: none"> <li>-20°C to +55°C</li> <li>RH 95% no condensing</li> </ul>
COMPLIANCE	<ul style="list-style-type: none"> <li>DOS SD-STD – 02.01 / PAS68</li> </ul>

## SYSTEMS INTEGRATION & ACCESS SPECIFICATIONS

LOGIC	<ul style="list-style-type: none"> <li>PLC combined beam and loop logic housed in drive cabinet</li> </ul>
SYSTEMS INTEGRATION	<ul style="list-style-type: none"> <li>Integrates with any access control and time &amp; attendance systems with 0 voltage input</li> </ul>
SPEED OF OPERATION	<ul style="list-style-type: none"> <li>3.5s - 5.0s rise and lowers in approx. 3.5s standard (dependent on length)</li> <li>Emergency fast operation (EFO): approx. 1.0s (with optional accumulator)</li> </ul>
POWER FAILURE	<ul style="list-style-type: none"> <li>In the event of power failure or emergency the <b>WEDGETECH</b> hydraulic hand pump can be used for manual override.</li> <li>Accumulator incl. of rechargeable batteries for 3 movements (optional)</li> </ul>

## INSTALLATION & MAINTENANCE

PRODUCT DELIVERY	<ul style="list-style-type: none"> <li>Sub - assembled.</li> </ul>
SITE PREPARATION	<ul style="list-style-type: none"> <li>Flat and leveled concrete (or paved surface +/- 5mm, with level resistance designed for an impact rate of 1852kJ (7.5t truck at 80km/h)</li> <li>400mm foundation pit needs to be dug to retain the <b>WEDGETECH</b> housing,</li> </ul>
CABLING & CONDUITS	<ul style="list-style-type: none"> <li>Trough in the ground</li> </ul>
LOGIC ACCESS	<ul style="list-style-type: none"> <li>Housed in the barrier housing, access via lockable service hatch door.</li> </ul>
MAINTENANCE ACCESS	<ul style="list-style-type: none"> <li>Barrier housing via lockable service hatch door.</li> </ul>
MTTR   <i>Mean Time To Repair</i>	<ul style="list-style-type: none"> <li>Approx. 1hr</li> </ul>
MCBF   <i>Mean Cycle Between Failure</i>	<ul style="list-style-type: none"> <li>1 million</li> </ul>

## DESIGN OPTIONS & ACCESSORIES

DRIVE	<ul style="list-style-type: none"> <li>Electro hydraulic drive in separate drive cabinet</li> </ul>
LOGIC CONTROLLER	<ul style="list-style-type: none"> <li>PLC logic housed in drive cabinet</li> </ul>
IMPACT LOAD	<ul style="list-style-type: none"> <li>1852kg (7.5 t @ 80km per hour)</li> </ul>
WHEEL LOAD	<ul style="list-style-type: none"> <li>100kN according to SLW60 – DIN 1072</li> </ul>
COVER PLATE	<ul style="list-style-type: none"> <li>Mild steel painted to standard – Flame Red <i>Other choice of colour available on request - Not recommended for corrosive environment applications</i></li> </ul>
BARRIER FINISHED OPTIONS	<ul style="list-style-type: none"> <li>Mild steel painted to standard - Black <i>Other choice of colour available on request - Not recommended for corrosive environment applications</i></li> </ul>

From



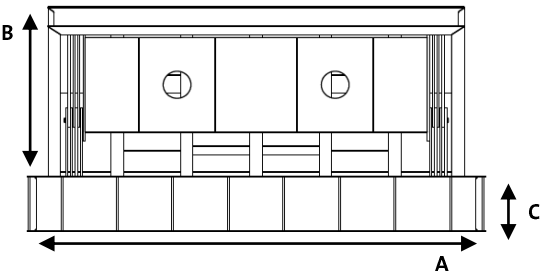
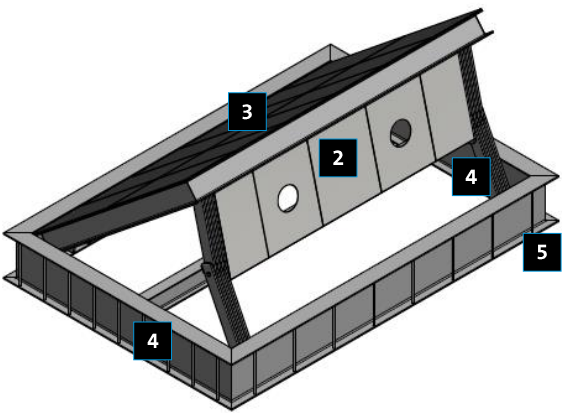
Bishopsgate

CABINET FINISHE OPTIONS	▪ Powder coated 3CR12 stainless steel (main housing section white and housing lid black) . Other choice of colour available on request. Suitable for low corrosive environment applications	
SAFETY & OPERATING ACCESSORIES	<ul style="list-style-type: none"> <li>▪ Loop detector</li> <li>▪ IR safety beam transmitter and receiver / reflector</li> <li>▪ Warning plate flashing lights in red</li> </ul>	<ul style="list-style-type: none"> <li>▪ Single / dual push button</li> <li>▪ Key-fob transmitter (one- or three-button) and receiver</li> </ul>
APPLICATION ACCESSORIES	▪ Separate control box for wall mounting inside a building	▪ Accumulator with back-up rechargeable batteries (allows for 3 operations)

PRODUCT OVERVIEW

INDEX KEY

- 1
- Hot dip galvanized mild steel wedge barrier housing with bolting points.
- 2
- Raised flame red warning plate
- 3
- Housing lid flush with street level when closed
- 4
- Hollow pipes for hydraulic cable feed
- 5
- Underground housing



DIMENSIONS & WEIGHT

A: BLOCKING LENGTH (mm)	2000 / 2500 / 3000 / 3500 / 4000
B: BLOCKING HEIGHT (mm)	1200mm
C: UNDERGROUND HOUSING	Blocking length + 360mm x W 2100mm x H 400mm
DRIVE CABINET	H 1400mm x W 1200mm x D 400mm incl. 200mm high base
CONTROL BOX	H 600mm x W 400mm x D 200mm (standard)
WEDGE & CYLINDER NET WEIGHT	Approx. 1900–2800kg dependent on length
DRIVE CABINET NET WEIGHT	Approx. 280–400kg



## ALLTECH RELIABILITY

Picking the optimum entrance control solution is a process based on close cooperation with our customers – all the way from **needs analysis**, **production**, to **implementation** and **service**

### From Analysis to Proposal

- Needs analysis forms the basis of a tailored proposal
- Specified both for the overall solution and for individual areas of the site
- Fully compliant with all local regulations

### Installation, Testing, Training

- Monitoring and implementing every installation
- Completion programme of functional reliability checks to ensure the equipment is safe
- Documenting each stage of the installation process
- Initiating start-up phase whilst focusing on training of relevant staff categories

### Operation and Maintenance

- Initiating procedures for operation and maintenance
- Offering adequate Maintenance Plans or Service Level Agreements

With Alltech, a brand of the Gunnebo Security Group, a safe and reliable entrance control system is ready for round-the-clock use.



**Bishopsgate Int (Nig) Ltd**  
52a Campbell Street  
Lagos Island CBD  
Lagos State 100221

Tel: +234 (700) 247-4677-4283  
Email: [sales@bishopsgate-nq.com](mailto:sales@bishopsgate-nq.com)  
Web: [www.bishopsgate-nq.com](http://www.bishopsgate-nq.com)

Brought to you by **GUNNEBO**  
For a safer world